

STEP 1

How to get started with Google Earth..



If you already have Google Earth loaded Please move on to **Step 2**. If not, follow the link below. Once the download process has been completed, you should automatically be able to open the software and begin using Google Earth.

If you experience issues installing Google Earth through the Google Updater, you can download the latest version of Google Earth directly from the following links:

- [Google Earth for PC](#)

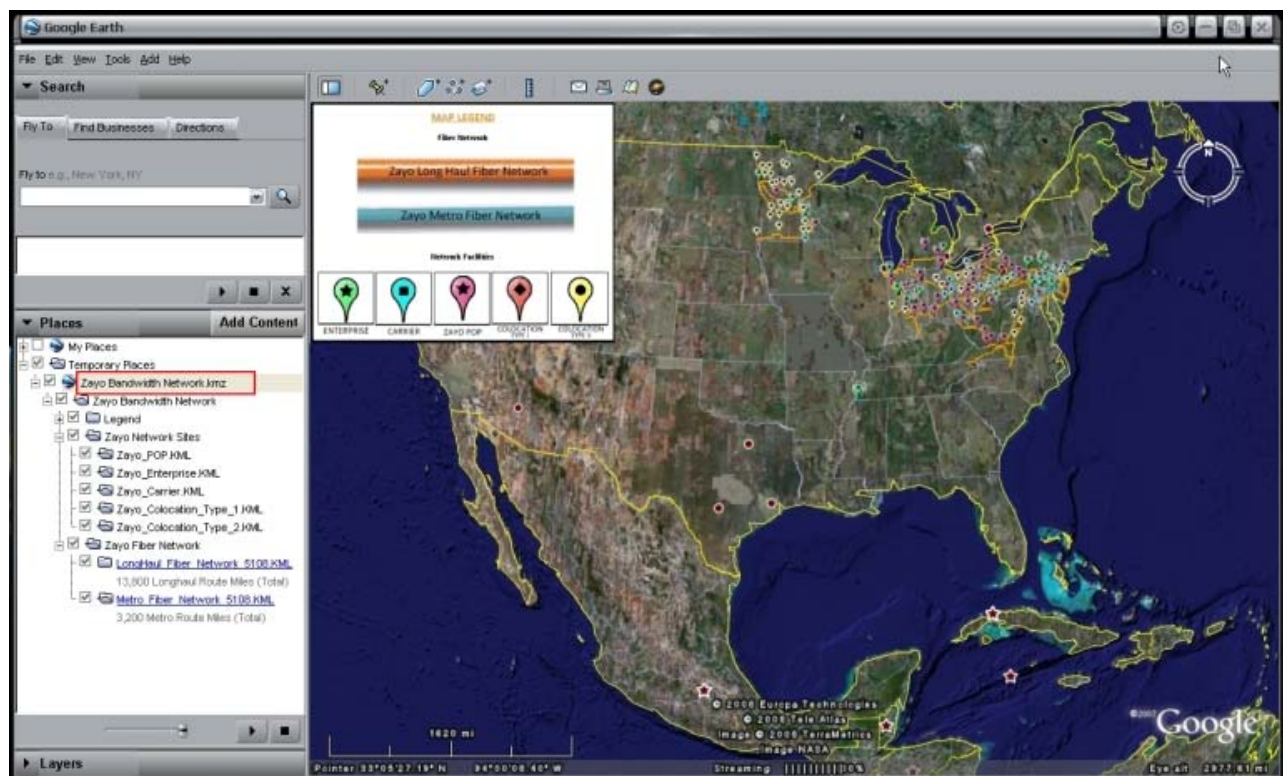
If you automatically launch Google Earth, an existing account may have been installed on that machine. Select the option **Run Free Version** in order to use the application.

STEP 2


Save file to your Local Computer..


Create a directory called **'ZayoGIS'** on your (root) or **"C:"** drive. After you have created the 'folder'. Save the file: **'Zayo Bandwidth Network.kmz'** in that specific folder.


At this point in the folder you can 'click' on **'Zayo Bandwidth Network.kmz'** This will launch the file into Google Earth (below).





Zayo Network Site (Details)

- 

Enterprise
Enterprise is a Customer location that has direct access to the Zayo Bandwidth fiber network/services
- 

Carrier
Carrier is a local (intra-LATA) or long distance (inter-LATA) communications service providing organization
- 

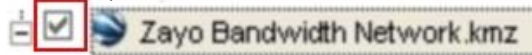
Zayo POP
Zayo Point of Presence is a physical location within a LATA that an IXC establishes for the purpose of gaining access to LEC networks.
- 

ILEC Colocation Type I
ILEC Colocations where Zayo has fiber presence
- 

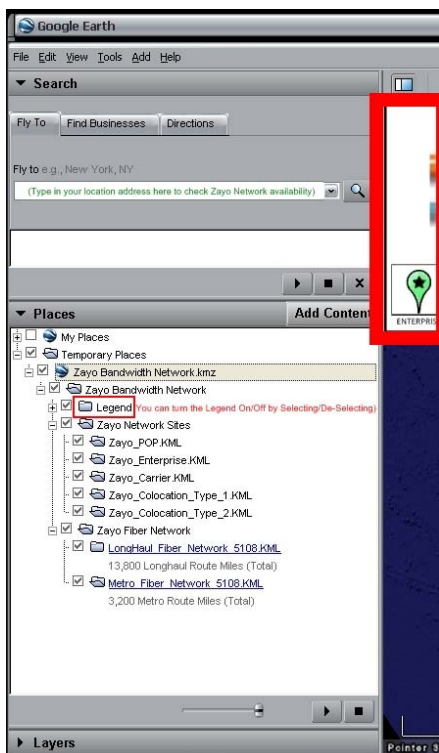
ILEC - Colocation Type II
ILEC Colocations where Zayo has leased an entrance facility over which to deliver services

Layer Control ..

Below is the main window from where you can control the amount of information you would like to see visible on the map. Simply select the appropriate 'check box' to turn **ON/OFF** a specific element.



Main 'Zayo Bandwidth Network' Selection Window 'PLACES'



Search Window ..

To check your location for access to Zayo Bandwidth Network. Select the 'Search' window 'Fly To' locations and type in your address. You can then use the Ruler tool.

Ruler..

Select the 'Ruler' icon on the toolbar. Then Select 'Path' and change the units to 'Feet'.



You will see a 'Placemark' **Yellow PIN** 'MY LOCATION NEW' for your address. Select the closest point to your building then create a path by 'clicking' along the roads on the map until you reach the Zayo Network in 'BLUE'/'ORANGE'. The measurement is placed on the line as below

Length: 1,812.00 Feet

